

## IL-23 release assay

### Assay Details

Cytokine: IL-23  
 Readout: ELISA  
 Cell type: Whole blood, PBMCs or fractionated blood cells  
 Stimulant: Various

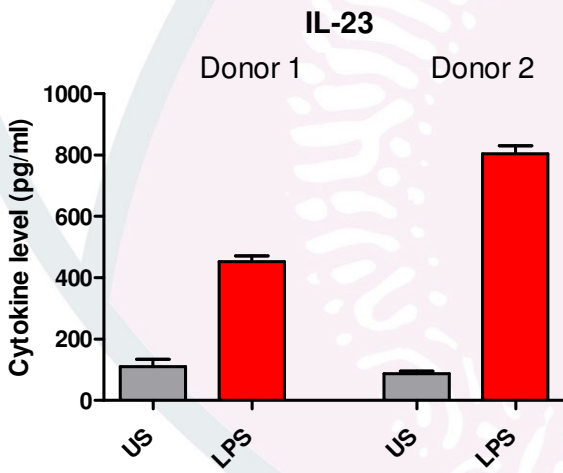


Figure 1: Release of cytokine from PBMCs following stimulation. Unstimulated (US) cells released low levels of cytokine (grey, n=8 wells). PBMCs released markedly elevated levels of cytokine when stimulated with LPS (red, n=24 wells).

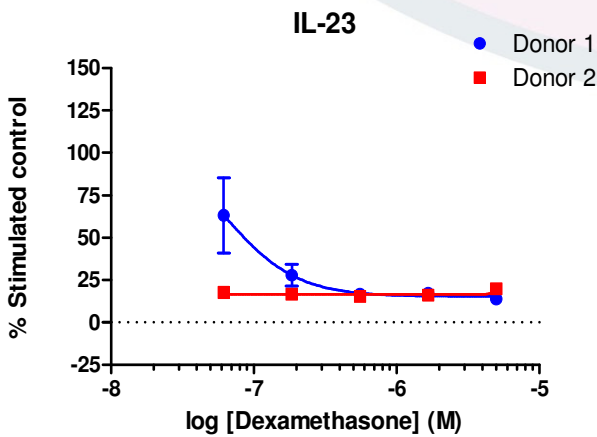


Figure 2: The effect of Dexamethasone on cytokine release from PBMCs stimulated with LPS (100ng/ml). Data is expressed as % of the Stimulated Controls (cells receiving LPS alone) and shown as mean +/- s.e.m. from duplicate points.

