

Ano2 ion channel cell line

Product Information

Catalogue ref: SB-HEK-Ano2

Species: Human

Host cell: HEK293

Quantity: 2 x 1ml (1x10⁶ cells/ml)

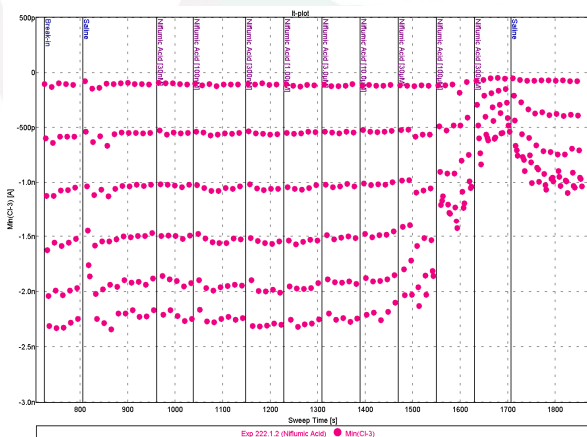


Figure 1: Example of a plotted time-course experiment in response to niflumic acid (current amplitude vs voltage pulses at 0.2 Hz).

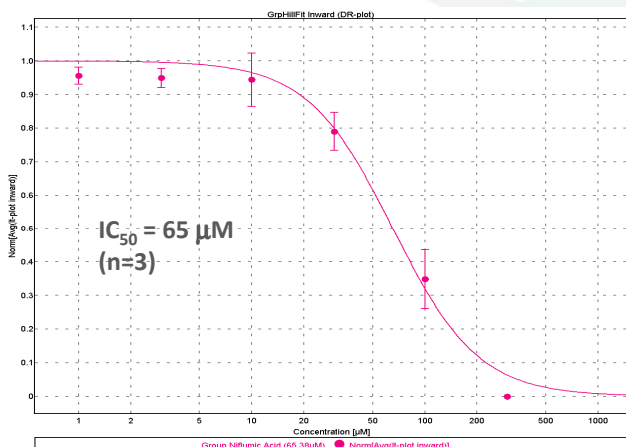


Figure 2: Concentration-dependent effects of niflumic acid on I_{Cl} currents (pA) obtained from HEK-293 cells stable transfected with anoctamin-2 and activated by intracellular calcium.

Further validation data available on request.

